

Stickers



These can be given at anytime by the Class Teacher and other members of staff working within the School, for good behaviour and good work. The stickers are recorded in your child's sticker booklet and once these are full the children can take their book home.

Children Experiencing Difficulties

If children are experiencing difficulties with behaviour we work with the child's Parent/Carers individually. We have a Behaviour Improvement Worker who works in School every day.

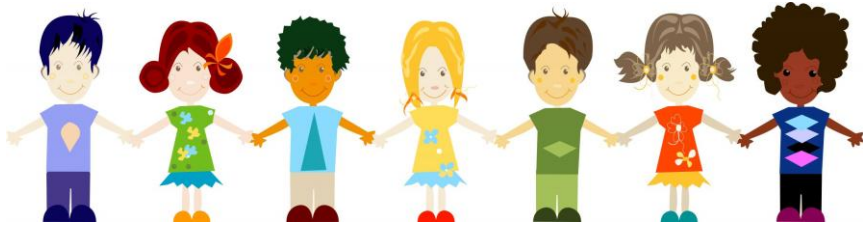
Sometimes it is necessary to create a Positive Early Years Behaviour Play Plan to support individual children.

If you ever have any issues with regard to behaviour then please do not hesitate to contact a member of the Early Years Team.



Behaviour Booklet

Working together to have a positive attitude.



At St Elisabeth's C.E. Primary School there are many strategies in place to encourage good work and behaviour. This booklet is designed to inform you about all the ways in which we achieve this.

Early Years Rules

At the beginning of September all children in Early Years work with staff to discuss Early Years Class Rules. These are displayed in the Early Years Classroom and are referred to daily.



Gentle Hands

The children in the Early Years are all encouraged to use Gentle Hands.

Gold Cards



These are given to children who:

- ✓ are polite and well mannered
- ✓ are kind and caring
- ✓ work to the best of their ability

At the end of each term Gold Cards are counted; the winning team and the winning children receive a certificate and a prize.



Activity bag

A child from each class who has been well behaved is chosen to take home the special activity bag.